

ME Series Limit Switch



1 Overview

ME Series Limit Switch is used in AC 50Hz circuit with a rated voltage up to 380V or a DC voltage up to 220V and with a current 5A for automatic control of the machine machinery and for moving mechanism action limit and program control.

2 Type Designation

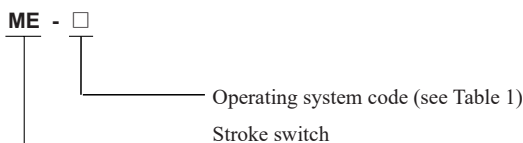


Table 1

| Operating system code | Operating method |
|-----------------------|--|
| 8104 | Roller rotary arm |
| 8107 | Adjustable rotary rod |
| 8108 | Adjustable roller rotary rod |
| 8111 | Direct-pressure plunger type |
| 8112 | Direct-pressure plunger lateral wheel |
| 8122 | Direct-pressure plunger vertical wheel |
| 8166 | Universal spring soft rod(Plastic head) |
| 8169 | Universal spring soft rod(Steel wire head) |
| 9101 | Universal spring soft rod(Metal head) |

3 Technical Parameters

- 3.1 Rated insulation voltage U_i : 380V
- 3.2 Resistive current I_{th} : 5A
- 3.3 Rated working voltage U_e : AC 380V, DC 220V.
- 3.4 Rated working current I_e : AC 0.8A, DC 0.16A.
- 3.5 Rated control capacity: AC300VA, DC20W.
- 3.6 Operating parameters see Table.

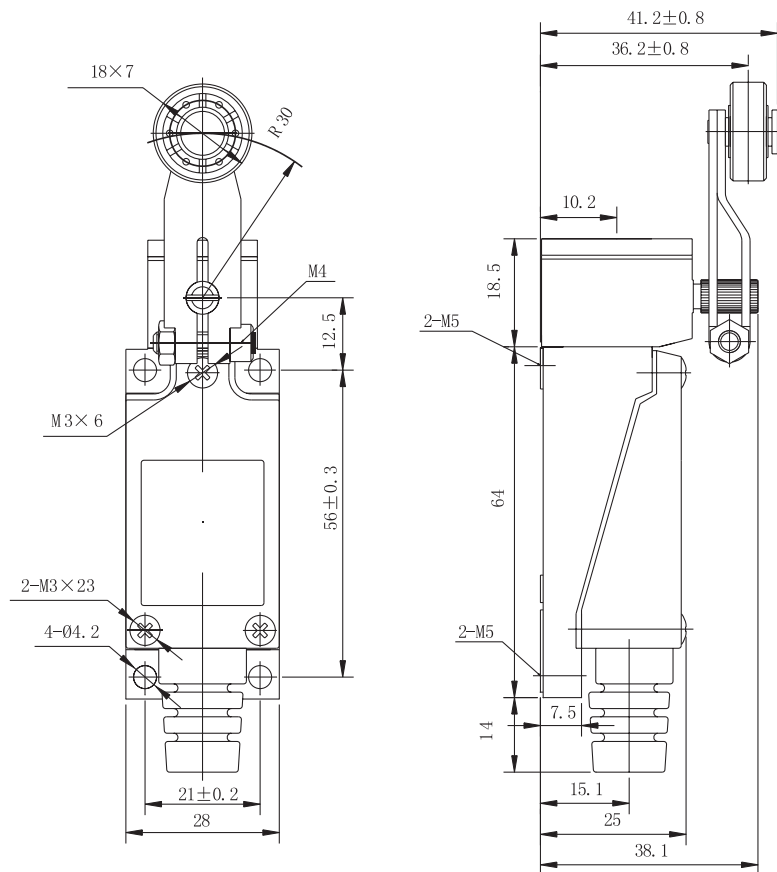
| Model | Operating method | Action travel | Full travel | Operating force |
|---------|--|-----------------|-----------------|----------------------|
| ME-8104 | Roller rotary arm | $\leq 20^\circ$ | $\geq 75^\circ$ | $\leq 6N$ |
| ME-8107 | Adjustable rotary rod | | | $\leq (3.4 \sim 8)N$ |
| ME-8108 | Adjustable roller rotary rod | | | $\leq (2 \sim 8)N$ |
| ME-8111 | Direct-pressure plunger type | $\leq 1.5mm$ | $\geq 4mm$ | $\leq 9N$ |
| ME-8112 | Direct-pressure plunger lateral wheel | | | |
| ME-8122 | Direct-pressure plunger vertical wheel | | | |
| ME-8166 | Universal spring soft rod | $\leq 30mm$ | - | $\leq 0.9N$ |
| ME-8169 | | | | |
| ME-9101 | | | | |

ME Series Limit Switch

4 Operating Conditions

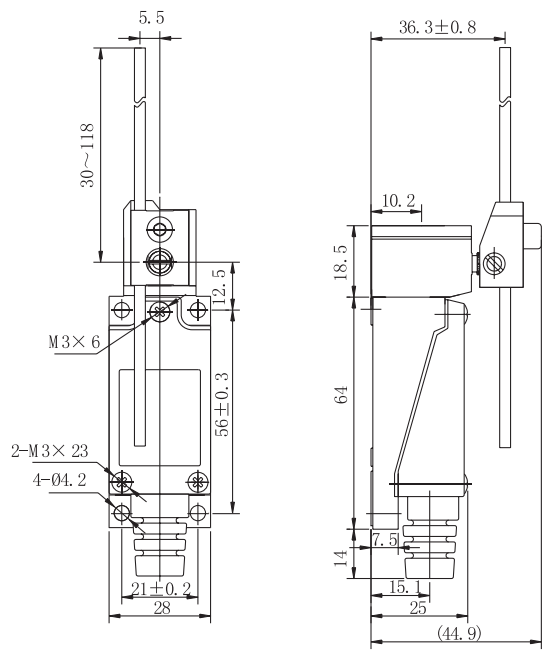
- 4.1 Ambient temperature: $-5^{\circ}\text{C}\sim+40^{\circ}\text{C}$.
- 4.2 Altitude: Not exceed 2,000 meters.
- 4.3 Atmospheric conditions: The relative humidity does not exceed 50% when the ambient temperature is $+40^{\circ}\text{C}$; higher relative humidity is allowed at a lower temperature. The mean maximum relative humidity of the wettest month is 90%, and the mean month minimum temperature of this month is $+25^{\circ}\text{C}$, and condensation on the product surface due to temperature changes shall be considered.
- 4.4 Pollution degree: 2.
- 4.5 Installed at a place where there is no obvious shaking, impact or vibration.
- 4.6 Install before or after the plate, fixed with screws, and mounted at any angle.

5 Outline and Installation Dimensions

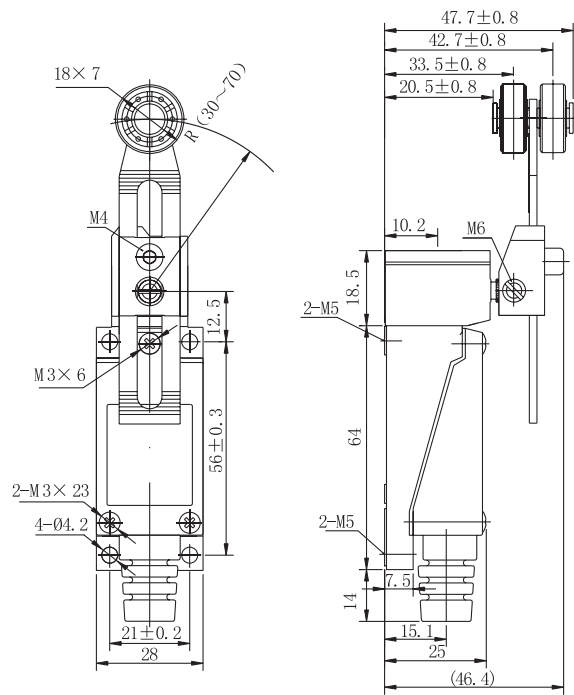


ME-8104

ME Series Limit Switch

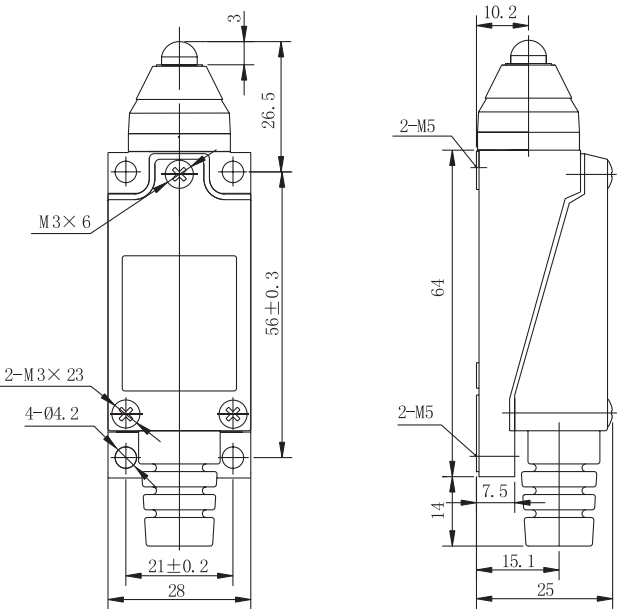


ME-8107

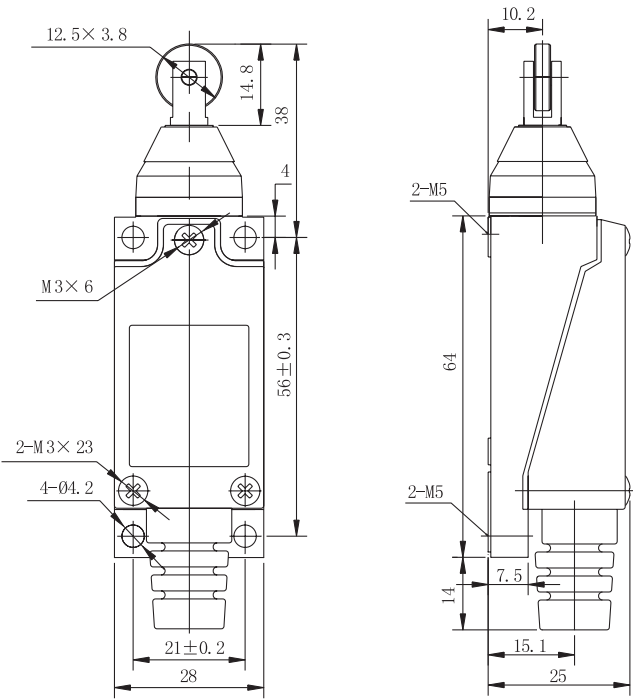


ME-8108

ME Series Limit Switch

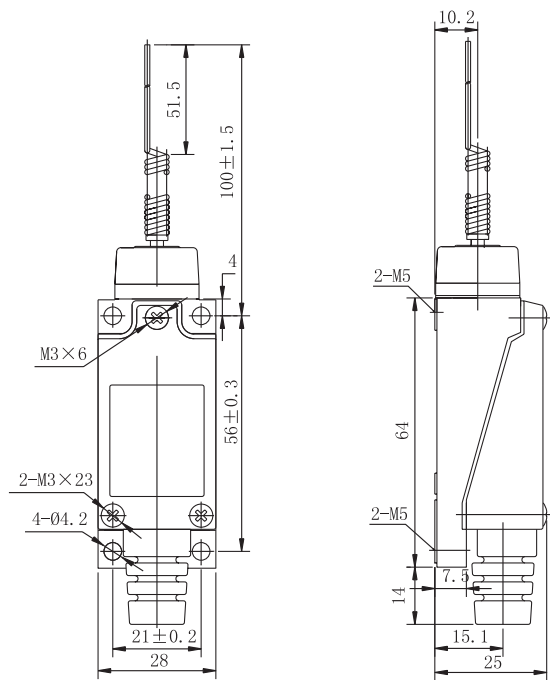


ME-8111

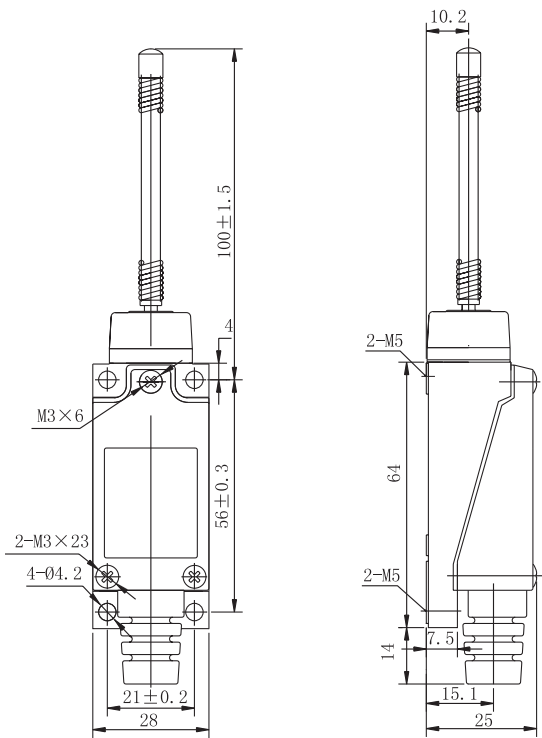


ME-8112

ME Series Limit Switch

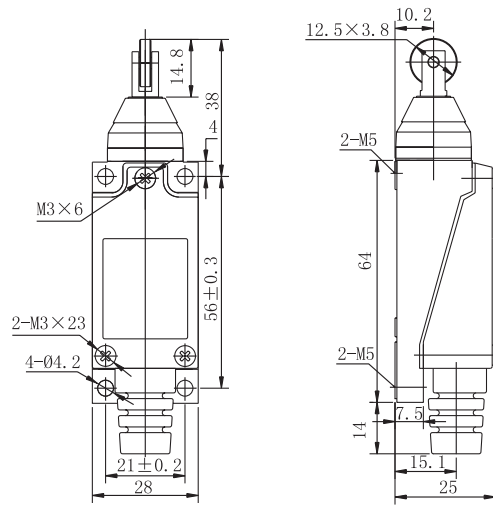


ME-8169

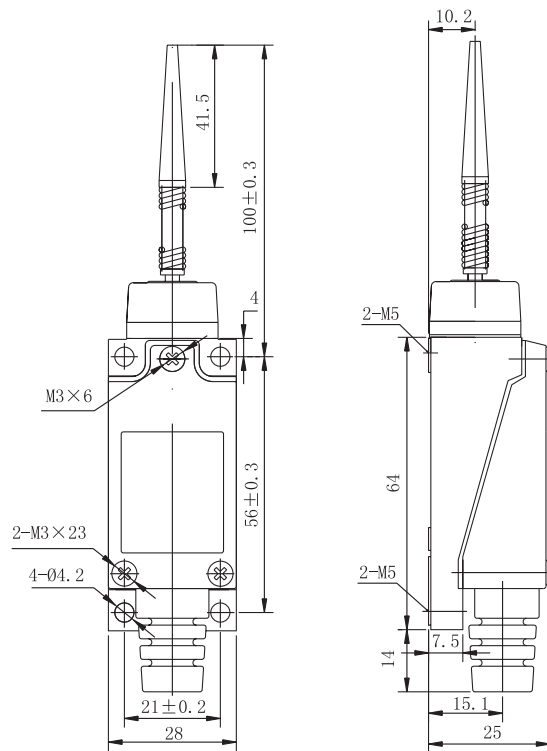


ME-9101

ME Series Limit Switch



ME-8122



ME-8166

6 Ordering Notice

Please specify the following items when ordering the product from our company:

- Product model and name
- Order quantity.