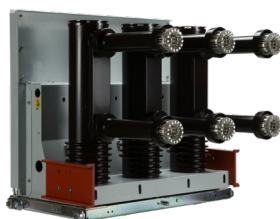


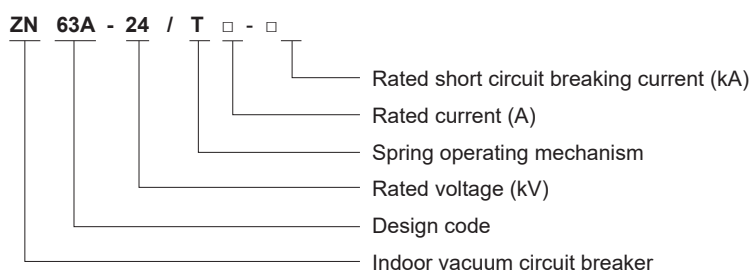
ZN63A-24 Indoor Medium-voltage AC Vacuum Circuit Breaker



1 Overview

- 1.1 Voltage level: AC24kV, frequency 50Hz; max. rated current up to 1600A
- 1.2 Used in the KYN28A-24(GZS1) mid-mounted handcart switchgear and XGN fixed switchgear

2 Type Designation



3 Working Environment Conditions

- 3.1 Ambient temperature: The upper limit is +40°C, and the lower limit is -15°C (-30°C storage and transportation conditions allowed)
- 3.2 Relative humidity: The mean daily relative humidity is ≤95%, and the mean monthly relative humidity is ≤90%.
- 3.3 The mean daily vapor pressure is 2.2×10^{-3} MPa, and the mean monthly vapor pressure is 1.8×10^{-3} MPa.
- 3.4 The altitude does not exceed 1000 m.
- 3.5 The seismic intensity does not exceed 8 degrees.
- 3.6 Installed in places where there shall be no fire, explosion hazards, serious pollution, chemical corrosion and severe vibration.

4 Technical Parameters

No.	Item	Unit	Value
1	Rated voltage	kV	24
2	Rated power frequency withstand voltage (1 min)	kV	65
3	Rated lightning impulse withstand voltage (peak)	kV	125
4	Rated frequency	Hz	50
5	Rated short circuit duration time	s	4
6	Rated closing and opening operating voltage	V	AC/DC220 AC/DC110
7	Closing time	ms	30~70
8	Opening time	ms	20~50
9	Contact closing bounce time	ms	≤2

ZN63A-24 Indoor Medium-voltage AC Vacuum Circuit Breaker

No.	Item	Unit	Value
10	Three-phase closing simultaneity	ms	≤ 2
11	Three-phase opening simultaneity	ms	≤ 2
12	Average opening speed (contact just opened by 6mm)	m/s	1.2~1.6
13	Average closing speed	m/s	0.6~1.0
14	Circuit breaker grade		E2, C2, M2

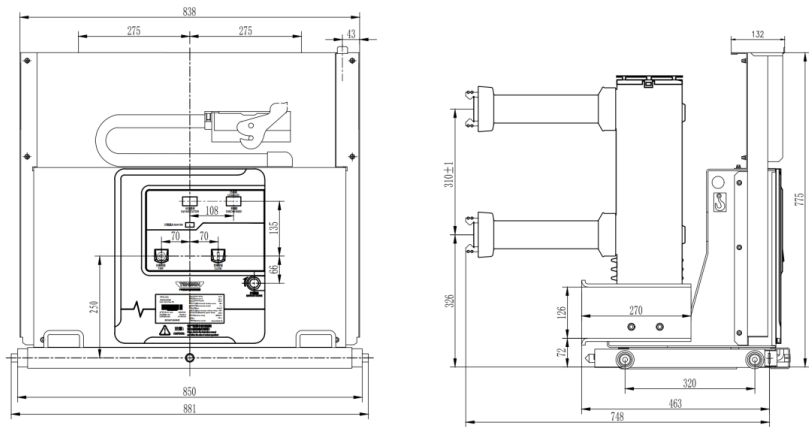
5 Selection Information

Model	Rated voltage (kV)	Rated current (A)	Rated short circuit breaking current (kA)	Rated short circuit making current (kA)	Rated short time withstand current (kA)	Rated peak withstand current (kA)	Phase distance (mm)	Interpole gap (mm)
ZN63A-24/T630-20	24	630	20	50	20	50	275	310
ZN63A-24/T630-25	24	630	25	63	25	63	275	310
ZN63A-24/T630-31.5	24	630	31.5	80	31.5	80	275	310
ZN63A-24/T1250-25	24	1250	25	63	25	63	275	310
ZN63A-24/T1250-31.5	24	1250	31.5	80	31.5	80	275	310
ZN63A-24/T1600-31.5	24	1600	31.5	80	31.5	80	275	310

ZN63A-24 Indoor Medium-voltage AC Vacuum Circuit Breaker

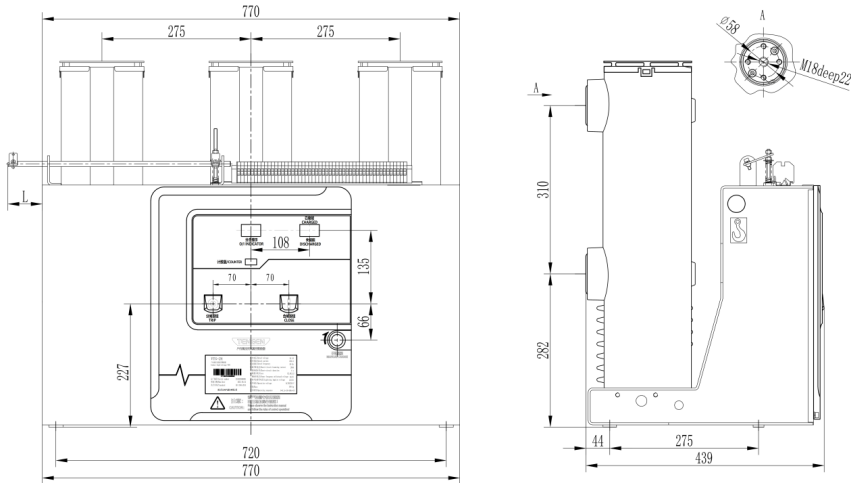
6 Outline and Installation Dimensions

6.1 Handcart type circuit breaker outline diagram:



Rated current (A)	630	1250	1600
With the size of the static contact(mm)	Φ35	Φ49	Φ55

6.2 Fixed type circuit breaker outline diagram:

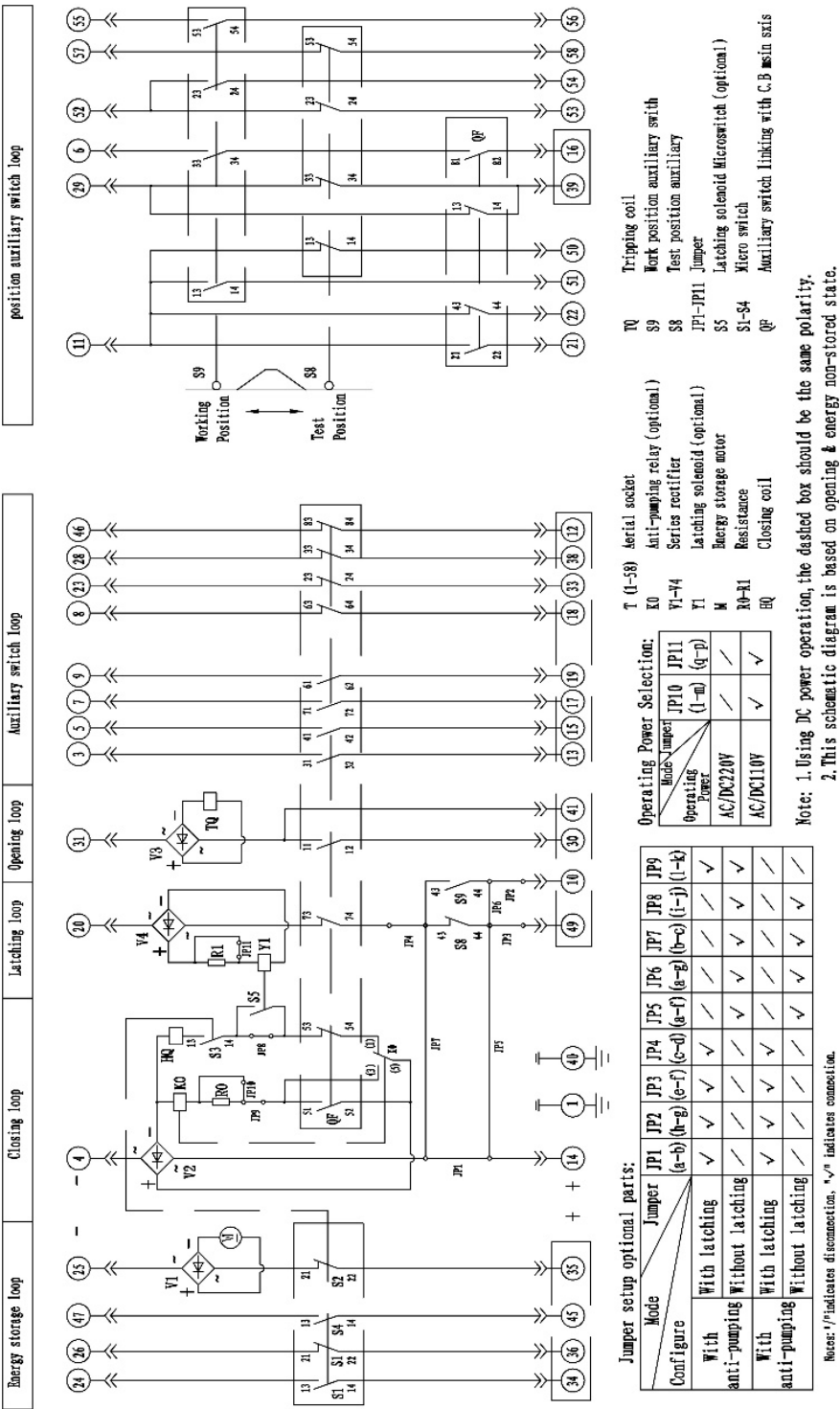


Note: The top interlock of the mechanism is L=50mm (there are left and right extended type interlocks, and the length can be customized according to the customer requirements)

ZN63A-24 Indoor Medium-voltage AC Vacuum Circuit Breaker

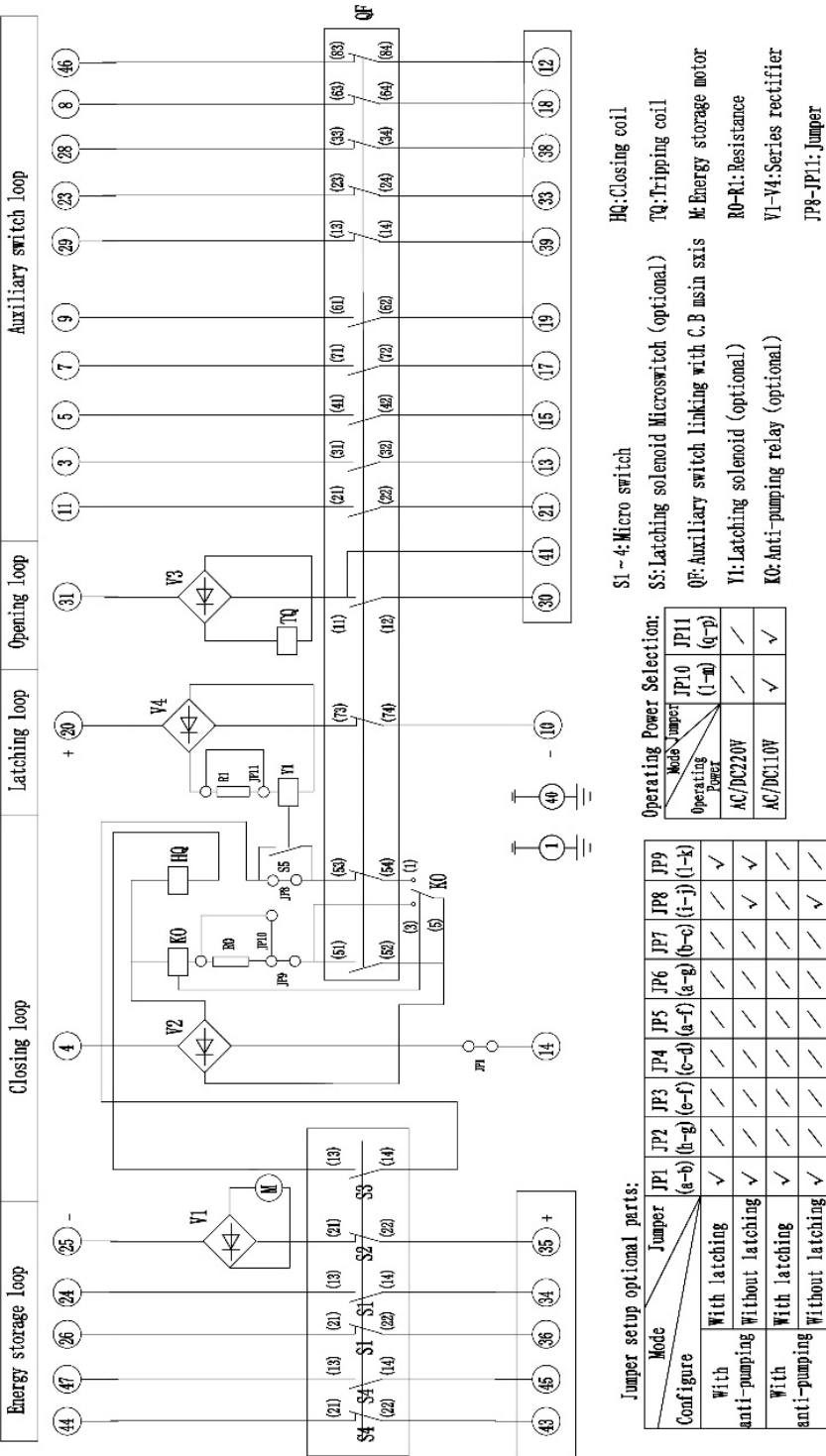
7 Electrical Diagram

7.1 Handcart type schematic diagram



ZN63A-24 Indoor Medium-voltage AC Vacuum Circuit Breaker

7.2 Fixed type schematic diagram



ZN63A-24 Indoor Medium-voltage AC Vacuum Circuit Breaker

8 Ordering Notice

Please specify the following items when ordering:

- 8.1 Name, model, specification and order quantity of circuit breaker;
- 8.2 Rated voltage, rated current and rated short circuit breaking current of circuit breaker;
- 8.3 Name and type of operating mechanism;
- 8.4 Names and quantity of spare parts and components;

Note: Any special requirements of the customer shall be indicated when ordering.