

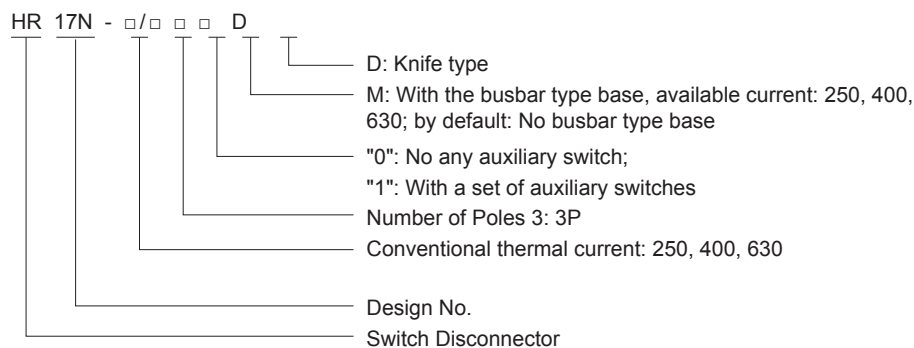
HR17N/D Series Switch Disconnecter



1 Overview

HR17N/D series switch disconnector is used in the AC 50Hz ow-voltage power distribution equipment with the rated voltage up to 690V and the rated current up to 630A and in the power distribution circuit and motor circuits with a high short circuit current as a power switch, an isolation switch and an emergency switch, but it is not generally used to directly power on the single motor. This product complies with GB/T 14048.3 and IEC 60947-3 standards.

2 Type Designation



3 Technical Parameters

Table 1

Main technical parameters			
Conventional thermal current Ith (A)	250	400	630
Rated operating current Ie (A)	250	400	630
Rated insulation voltage Ui (A)	1000		
Rated operating voltage Ue (V)	AC415/690 50Hz		
Rated impulse withstand voltage Uimp (kV)	12		
Use category	AC-23B/AC-22B		
Rated short time withstand current Icw (kA/s)	10	15	
Rated short circuit making capacity Icm (kA)	17	30	

4 Operating Conditions

4.1 Ambient temperature

The upper limit of ambient air temperature does not exceed +40°C, the mean temperature within 24h does not exceed +35°C, and the lower limit shall not be below -5°C.

4.2 Altitude

The altitude of the installation site shall not exceed 2000mm.

4.3 Atmospheric conditions

4.3.1 The relative humidity of the installation site does not exceed 50% at a maximum temperature of +40°C, and a higher relative humidity is allowed at low temperatures, such as up to 90% at 20°C. Special measures should be taken for condensation occurred occasionally due to temperature changes.

4.3.2 Pollution degree: Level 3.

4.4 Installation category: III; the product is installed in a place where there is no significant shaking, no shock vibration, and no rain or snow attacks, and there is no explosive hazard medium containing gas or dust sufficient to cause metal corrosion and insulation damage.

4.5 The switch should be installed vertically and the indication position at the indicator end of the handle shall be consistent with the state of the product.

HR17N/D Series Switch Disconnect

5 Features

- 5.1 Structure
The HR17N/D series switch disconnect is primarily composed of a mounting base, a handle and an anti-electric shock guard. The shell is made of material, featuring with compact structure, light weight, reliable operation, safety, easy installation and artistic appearance.
- 5.2 Auxiliary switches
The disconnecter can be configured with an auxiliary switch that clearly indicates the switch is in the "ON" or "ON" position.
- 5.3 Busbar base
The disconnecter can be configured with a busbar type base that can be installed on the 60mm busbar system with a busbar thickness 10mm without punching holes.

6 Outline and Installation Dimensions

6.1 The outline and installation dimensions of the fixed type see Table 2 and Fig. 1.

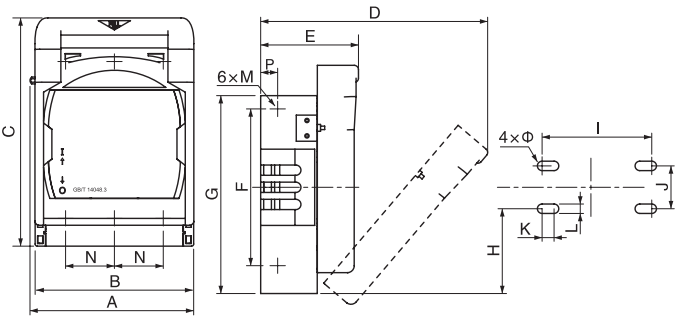


Fig. 1 Installation and outline dimensions drawing for HR17N series fixed type

Table 2

Model	A	B	C	D	E	F	G	H	I	J	K	L	φ	M bolt	N	P
HR17N-250/3D	191	186	267	300	115	183	231	99	131	50	17	11	-	M10	57	22
HR17N-400/3D	214	210	300	330	127	210	252	103	130	50	-	11	11	M10	65	25
HR17N-630/3D	214	210	300	330	127	210	252	103	130	50	-	11	11	M10	65	25

Note: The "F, N" size refers to the spacing between the terminal blocks, and the "P" size refers to the distance from the terminal block to the floor.

6.2 The installation and outline dimensions of the busbar type see Table 3 and Fig. 2.

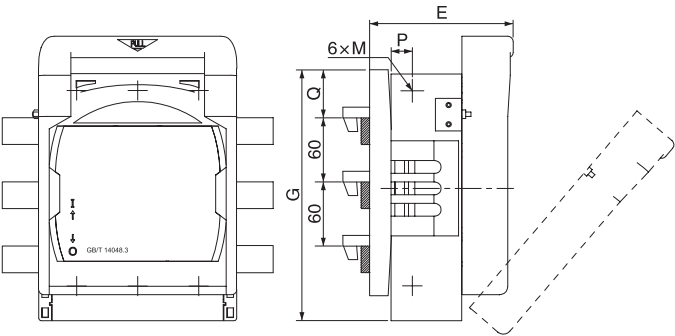


Fig. 2 Installation and outline dimensions drawing for HR17N series busbar type

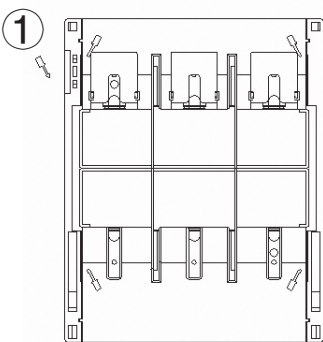
HR17N/D Series Switch Disconnector

Table 3

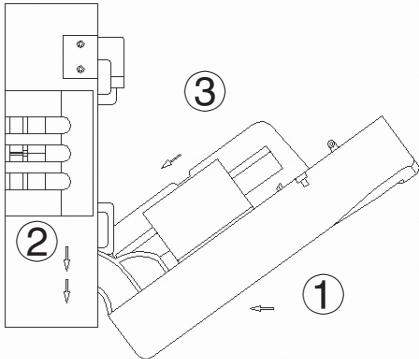
Model	E	G	M bolt	Q	P
HR17N-250/3D	160	235	M10	69	22
HR17N-400/3D	153	264	M10	64	25
HR17N-630/3D	153	264	M10	64	25

Note: The body of the busbar type product is the same as that of the fixed type, and the busbar is that the fixed type product is equipped with a busbar type base; the same dimensions refer to the fixed type.

7 Product Installation



Disassembly of the upper and lower protective covers: Insert the small slotted screw into the gap between the protective cover and the base to open the buckle, and there are protective covers in four places.

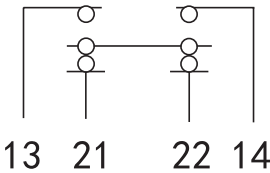


Handle and base disassembly: When the handle is open in the fan-shaped manner, move the handle up to separate the base from the handle;
Handle and base installation: Insert the handle into the base fixing groove, and push the handle down into the base fixing groove, as illustrated in ① and ② in the figure;
Fuse installation: The fuse can be replaced after the handle is dismantled, and the assembly direction is shown in ③ in the above figure.

8 Auxiliary Switch and Wiring Diagram



JW2-11



The switch is in the OFF position

9 Ordering Notice

9.1 Please specify the following items when ordering
Please specify the product name, model, rated operating current, number of poles, whether a micro switch is provided or not, whether there is a busbar type base, and the quantity of disconnectors.
9.2 Ordering example: HR17N-400/30D 400A 100 sets.