



## RT18 Series Cylindrical Cap Fuse

### 1 Overview

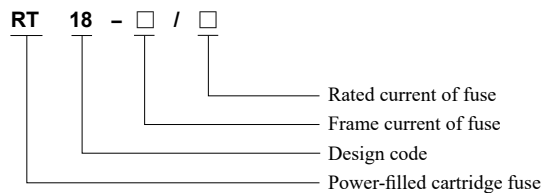
RT18 series cylindrical cap fuse is suitable for power distribution equipment of AC 50Hz industrial electrical device with rated voltage up to 690V and rated current up to 125A for line overload and short-circuit protection. (It is not recommended to install this fuse in the capacitor box, and RT16-00 model is recommended for capacitor box).

Fuse-base signal device formed by LED lamp and resistor Code "X".

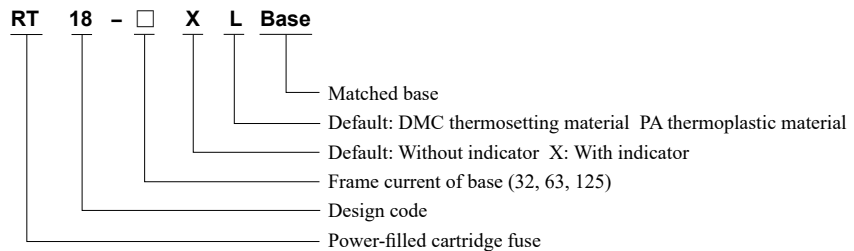
Standard: IEC60269-2.

### 2 Type Designation

Fuse model:



Mounting base:



### 3 Technical Parameters

#### 3.1 Fuse base parameters

Model	Rated voltage (V)	Rated current (A)	Number of poles	Dimensions (mm)					
				A	B	C	D	E	F
RT18-32 RT18-32X	690	32	1P	62	60	79	35	80	18
	690	32	2P	62	60	79	35	80	36
	690	32	3P	62	60	79	35	80	54
	690	32	4P	62	60	79	35	80	108
RT18-63 RT18-63X	690	63	1P	80	78	103	35	110	26
	690	63	2P	80	78	103	35	110	52
	690	63	3P	80	78	103	35	110	78
	690	63	4P	80	78	103	35	110	104
RT18-32L RT18-32XL (L means moulded case)	500	32	1P	59	55	80	35	78	18
	500	32	2P	59	55	80	35	78	36
	500	32	3P	59	55	80	35	78	54
	500	32	4P	59	55	80	35	78	108

## RT18 Series Cylindrical Cap Fuse

continue

Model	Rated voltage (V)	Rated current (A)	Number of poles	Dimensions (mm)					
				A	B	C	D	E	F
RT18-63L RT18-63XL (L means moulded case)	500	63	1P	78	75	108	35	100	27
	500	63	2P	78	75	108	35	100	54
	500	63	3P	78	75	108	35	100	81
	500	63	4P	78	75	108	35	100	108
RT18-125L RT18-125XL (L means moulded case)	690	125	1P	78	75	126	35	104	36
	690	125	2P	78	75	126	35	104	72
	690	125	3P	78	75	126	35	104	108
	690	125	4P	78	75	126	35	104	144

### 3.2 Fuse parameters

Model	Similar models	Size (CxL)	Rated voltage (V)	Rated current (A)	Power dissipation (W)	Rated breaking capacity (kA)
RT18-32	RT28-32, RT14-20 RT19-32, RT29-32 R015	10 X 38	500/690	2,4,6,8,10, 16, 20, 25, 30, 32	≤3	120/50
RT18-63	RT28-63, RT14-32 RT19-63, RT29-63 R016	14 X 51	500/690	2, 4, 6, 8, 10, 16, 20, 25, 32, 40, 50, 63	≤5	120/50
RT18-125	RT19-125 RT29-125 R017	22 X 58	500/690	10, 16, 20 25, 32, 40, 50, 63, 80, 100, 125	≤9.5	120/50

### 3.3 Fuse support base and fuse configuration parameters

Model of fuse support base	Matched fuse		
	Size	Fuse model	Current (A)
RT18-32, RT18-32X RT18-32L, RT18-32XL	10 X 38	RT18-32, R015	2, 4, 6, 10, 16, 20, 25, 30, 32
RT18-63, RT18-63X RT18-63L, RT18-63XL	14 X 51	RT18-63, R016	2, 4, 6, 10, 16, 20, 25, 32, 40, 50, 63
RT18-125L, RT18-125XL	22 X 58	R017	10, 16, 25, 32, 40, 50, 63, 80, 100, 125

## 4 Operating Conditions

4.1 Ambient temperature: Not exceed 40°C; the mean value measured within 24h does not exceed 35°C, and within one year is below this temperature value. The lower limit of the ambient air temperature is -5°C.

4.2 Altitude: Not exceed 2,000 meters.

4.3 Atmospheric conditions: The air is clean, and its relative humidity does not exceed 50% at the maximum temperature 40°C; a higher relative humidity is allowed at a low temperature. For example, the relative humidity can be up to 90% at 20°C; the middle condensation may occur occasionally due to temperature changes under those conditions.

4.4 Pollution degree: 3.

4.5 Installation category: III.

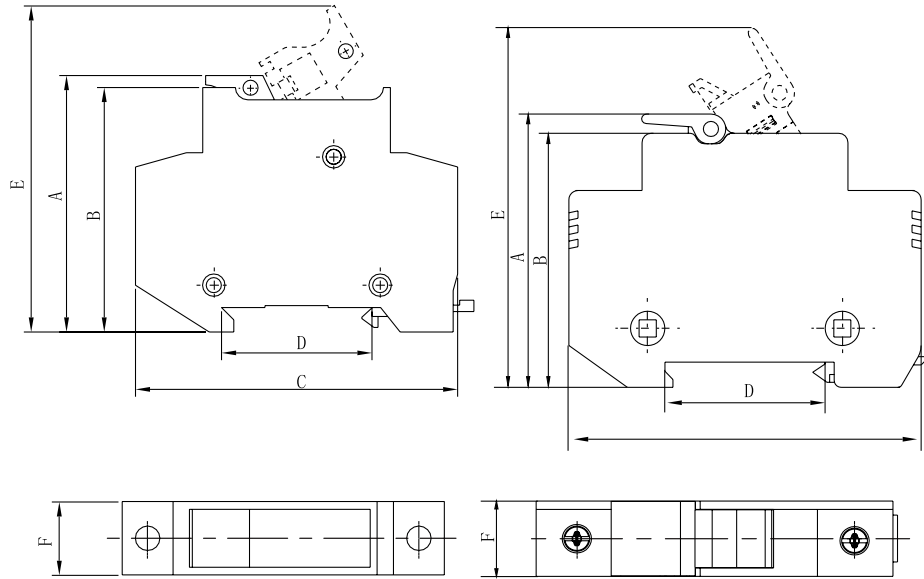
4.6 Please contact the manufacturer when the working conditions are different from the above conditions.

## RT18 Series Cylindrical Cap Fuse

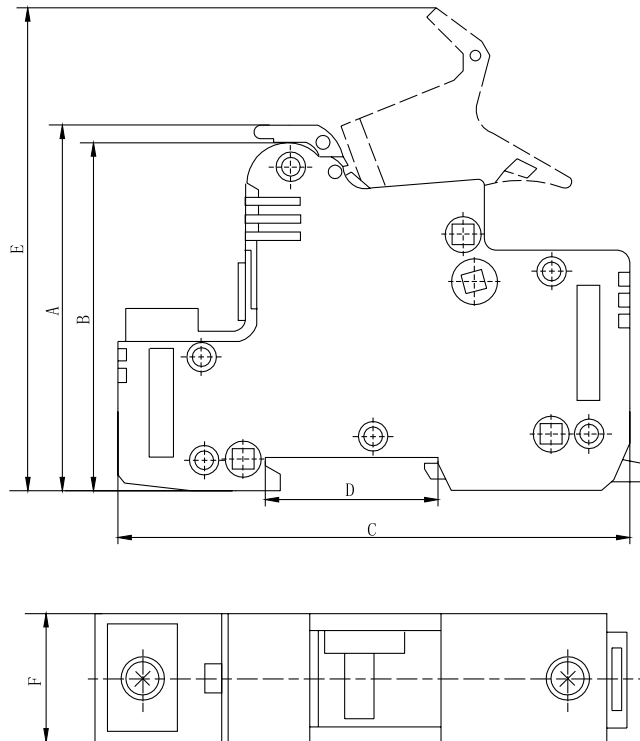
### 5 Outline and Installation Dimensions

RT18-32, RT18-63 Base

RT18-32L Base

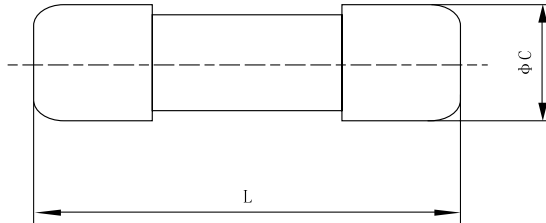


RT18-63L, RT18-125L Base



## RT18 Series Cylindrical Cap Fuse

RT18-63L, RT18-125L Fuse



### 6 Ordering Notice

6.1 Please specify the following contents when ordering:

6.1.1 Please specify the model, rated current and quantity of fuse.

6.1.2 Please specify the model, specification, base name, and order quantity of base.

6.2 Order example: To order RT18-32/32A 100 pcs, indicating 100 pcs RT18-32 32A fuses with rated current 32A is ordered;

To order RT18-32 base 100 pcs, indicating 100 pcs RT18-32 fuse bases.